

WASTE TREATMENT PLANT PROJECT REQUEST FOR INTEREST

Sample Bottle Assemblies

Requisition Number: 24590-04-SCR-HAHH-00002
Submit Interest By: July 31, 2024
Quality Level: CM
Award Type: Firm-Fixed Price

ESTIMATED SCHEDULE **August 31, 2024**

Issue Request for Proposal: May 11, 2023
Award and Notice to Proceed: TBD

PROJECT DESCRIPTION AND LOCATION

The Hanford Tank Waste Treatment and Immobilization Plant (WTP) is a complex of radioactive waste treatment processing facilities designed and constructed by Bechtel National, Inc. for the Department of Energy (DOE). The facility will process the Hanford Site tank waste and convert the waste into a stable glass form.

The Project site is located in the 200 East Area of the Hanford Reservation near Richland, Washington, along the Columbia River. The site elevation varies from 662 to 684 feet above mean sea level. Ambient temperature range is -23 degrees F minimum to 113 degrees F maximum, with relative humidity of 5% minimum to 100% maximum. The project design life is 40 years.

SCOPE OF WORK

Fabrication and assembly of 35 mL sample bottle assemblies (with lids and labels) in accordance with the reference drawings.

Equipment and Materials Required

See attached drawings

QUALITY ASSURANCE (QA) REQUIREMENTS

Programmatic Quality Assurance (QA) requirements for subcontracts or purchase orders performed in the WTP Jobsite will be:

<input checked="" type="checkbox"/>	Non-Permanent or Temporary Work - Generally no QA program required
<input type="checkbox"/>	Commercial Quality - Based on DOE Order 414.1C
<input type="checkbox"/>	Nuclear Level Quality - Based on ASME NQA-1 2000

Bechtel may require, as an element of bidder pre-qualification, submission of a representative sample QA Program or Table of Contents copy. For Nuclear Level Quality subcontracts, the successful bidder's QA Program must be approved prior to award of the subcontract or purchase order.

BIDDER REGISTRATION AND PRE-QUALIFICATION

The BNI Acquisition Services Subcontracts/Purchasing group is responsible for collection, evaluation, and internal publication of potential bidders' information for the purpose of pre-qualifying them to bid on any particular subcontract or purchase order.

As part of this process, BNI requires all potential offerors to register at the Supplier and Contractor Portal at: <https://www.Bechtel.com/supplier/>

If your company has registered previously, then only supplemental information should be sent to the Bechtel National, Inc. representative noted below.

Information to be provided by potential bidders must include:

- Dun and Bradstreet Number
- Company Name

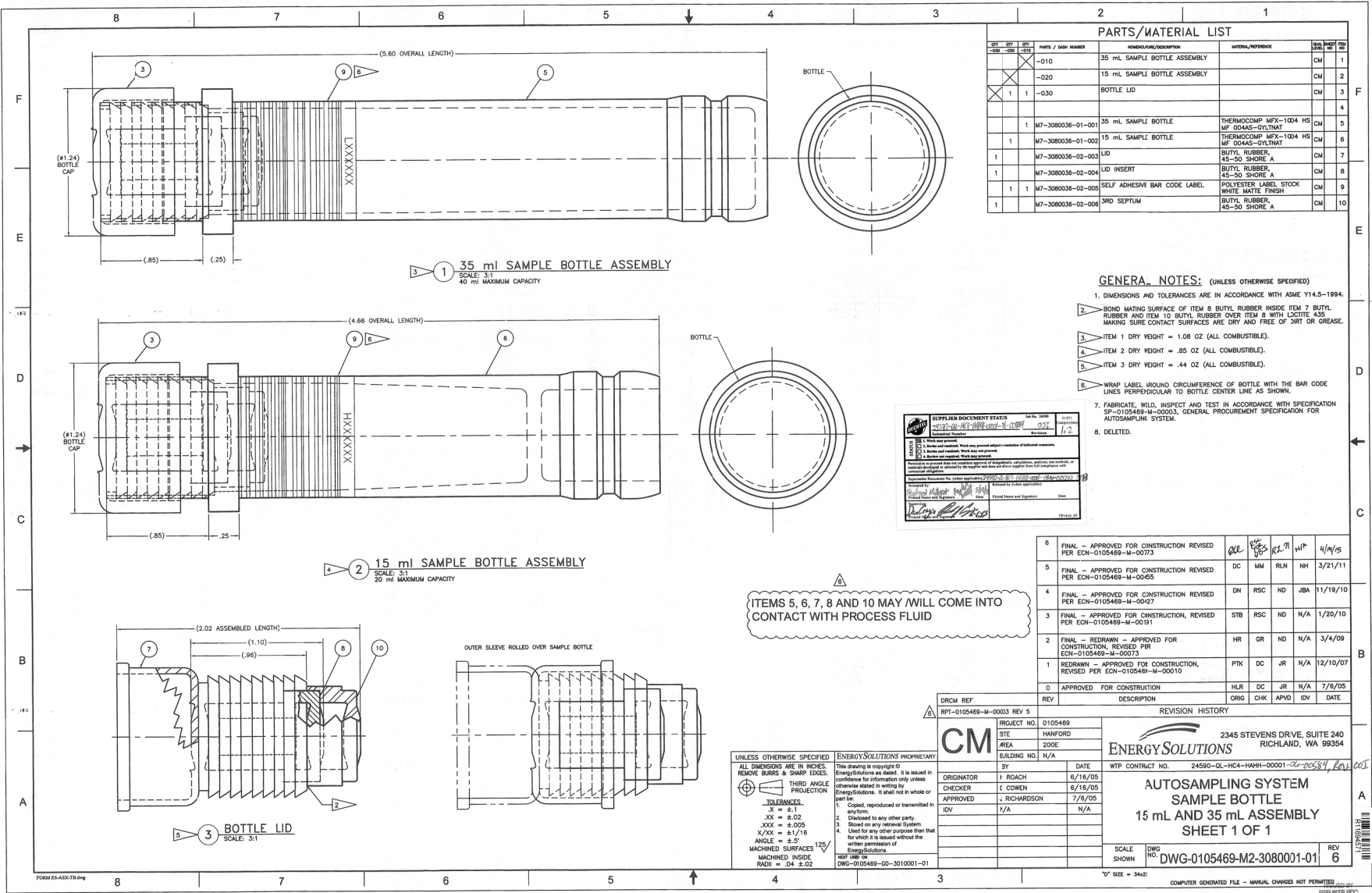
- Company Address
- Contact Phone Number
- Contact Person
- Email Address
- Safety Data and Information
- Applicable Work Experience and Projects
- Size of Business (Small, Large)

WTP BACKGROUND

Information about the WTP Project can be found on <http://www.hanfordvitplant.com>

CONTACT

Bechtel National, Inc.
450 Hills Street
Richland, WA 99354
Attn: Kristina Parfait
Phone: 5069-827-2675
Email Address: klparfait@bechtel.us



PARTS/MATERIAL LIST

QTY	REV	QTY	QTY	PARTS / ITEM NUMBER	MODEL/DRAWING/DESCRIPTION	UNIT/REFERENCE	QTY	REV
				-010	35 ML SAMPLE BOTTLE ASSEMBLY	CM	1	
				-020	15 ML SAMPLE BOTTLE ASSEMBLY	CM	2	
				-030	BOTTLE LID	CM	3	
				1	1			
				1	1			
				1	1			
				1	1			
				1	1			
				1	1			
				1	1			
				1	1			
				1	1			

GENERAL NOTES: (UNLESS OTHERWISE SPECIFIED)

- DIMENSIONS AND TOLERANCES ARE IN ACCORDANCE WITH ASME Y14.5-1994.
- BOND MATING SURFACE OF ITEM 8 BUTYL RUBBER INSIDE ITEM 7 BUTYL RUBBER AND ITEM 10 BUTYL RUBBER OVER ITEM 8 WITH LOCITE 435. MAKING SURE CONTACT SURFACES ARE DRY AND FREE OF DIRT OR GREASE.
- ITEM 1 DRY WEIGHT = 1.08 OZ (ALL COMBUSTIBLE).
- ITEM 2 DRY WEIGHT = .85 OZ (ALL COMBUSTIBLE).
- ITEM 3 DRY WEIGHT = .44 OZ (ALL COMBUSTIBLE).
- WRAP LABEL AROUND CIRCUMFERENCE OF BOTTLE WITH THE BAR CODE LINES PERPENDICULAR TO BOTTLE CENTER LINE AS SHOWN.
- FABRICATE, WELD, INSPECT AND TEST IN ACCORDANCE WITH SPECIFICATION SP-0105469-M-00003, GENERAL PROCUREMENT SPECIFICATION FOR AUTOSAMPLING SYSTEM.
- DELETED.

SUPPLIER DOCUMENT STATUS

DATE: 1/7

1. Review and approve. Work any proposed changes to modified documents.

2. Review and approve. Work any proposed changes to modified documents.

3. Review and approve. Work any proposed changes to modified documents.

4. Review and approve. Work any proposed changes to modified documents.

5. Review and approve. Work any proposed changes to modified documents.

6. Review and approve. Work any proposed changes to modified documents.

7. Review and approve. Work any proposed changes to modified documents.

8. Review and approve. Work any proposed changes to modified documents.

9. Review and approve. Work any proposed changes to modified documents.

10. Review and approve. Work any proposed changes to modified documents.

11. Review and approve. Work any proposed changes to modified documents.

12. Review and approve. Work any proposed changes to modified documents.

13. Review and approve. Work any proposed changes to modified documents.

14. Review and approve. Work any proposed changes to modified documents.

15. Review and approve. Work any proposed changes to modified documents.

16. Review and approve. Work any proposed changes to modified documents.

17. Review and approve. Work any proposed changes to modified documents.

18. Review and approve. Work any proposed changes to modified documents.

19. Review and approve. Work any proposed changes to modified documents.

20. Review and approve. Work any proposed changes to modified documents.

21. Review and approve. Work any proposed changes to modified documents.

22. Review and approve. Work any proposed changes to modified documents.

23. Review and approve. Work any proposed changes to modified documents.

24. Review and approve. Work any proposed changes to modified documents.

25. Review and approve. Work any proposed changes to modified documents.

26. Review and approve. Work any proposed changes to modified documents.

27. Review and approve. Work any proposed changes to modified documents.

28. Review and approve. Work any proposed changes to modified documents.

29. Review and approve. Work any proposed changes to modified documents.

30. Review and approve. Work any proposed changes to modified documents.

31. Review and approve. Work any proposed changes to modified documents.

32. Review and approve. Work any proposed changes to modified documents.

33. Review and approve. Work any proposed changes to modified documents.

34. Review and approve. Work any proposed changes to modified documents.

35. Review and approve. Work any proposed changes to modified documents.

36. Review and approve. Work any proposed changes to modified documents.

37. Review and approve. Work any proposed changes to modified documents.

38. Review and approve. Work any proposed changes to modified documents.

39. Review and approve. Work any proposed changes to modified documents.

40. Review and approve. Work any proposed changes to modified documents.

41. Review and approve. Work any proposed changes to modified documents.

42. Review and approve. Work any proposed changes to modified documents.

43. Review and approve. Work any proposed changes to modified documents.

44. Review and approve. Work any proposed changes to modified documents.

45. Review and approve. Work any proposed changes to modified documents.

46. Review and approve. Work any proposed changes to modified documents.

47. Review and approve. Work any proposed changes to modified documents.

48. Review and approve. Work any proposed changes to modified documents.

49. Review and approve. Work any proposed changes to modified documents.

50. Review and approve. Work any proposed changes to modified documents.

ITEMS 5, 6, 7, 8 AND 10 MAY /WILL COME INTO CONTACT WITH PROCESS FLUID

REV	DESCRIPTION	ORIG	CHKR	APVD	IDV	DATE
6	FINAL - APPROVED FOR CONSTRUCTION REVISED PER ECR-0105469-M-00073	DC	MM	RLN	NH	4/14/05
5	FINAL - APPROVED FOR CONSTRUCTION REVISED PER ECR-0105469-M-00065	DC	MM	RLN	NH	3/21/11
4	FINAL - APPROVED FOR CONSTRUCTION REVISED PER ECR-0105469-M-00027	DN	RSC	ND	JBA	11/19/10
3	FINAL - APPROVED FOR CONSTRUCTION, REVISED PER ECR-0105469-M-00031	STB	RSC	ND	N/A	1/20/10
2	FINAL - REDRAWN - APPROVED FOR CONSTRUCTION, REVISED PER ECR-0105469-M-00073	HR	GR	ND	N/A	3/4/09
1	REDRAWN - APPROVED FOR CONSTRUCTION, REVISED PER ECR-0105469-M-00010	PTK	DC	JR	N/A	12/10/07
0	APPROVED FOR CONSTRUCTION	HJR	DC	JR	N/A	7/8/05

UNLESS OTHERWISE SPECIFIED

ALL DIMENSIONS ARE IN INCHES.

REMOVE BARRS & SHARP EDGES.

THIRD ANGLE PROJECTION

TOLERANCES:

X = ±.1

XX = ±.02

XXX = ±.005

X/XX = ±1/16

ANGLE = .5°

MACHINED SURFACES

RADII = .04 ±.02

ENERGYSOLUTIONS PROPRIETARY

This drawing is copyright © Energysolutions and is issued in confidence for information only unless otherwise stated in writing by Energysolutions. It shall not in whole or part be:

- Copied, reproduced or transmitted in any form.
- Disclosed to any other party.
- Used on any reuse system.
- Used for any other purpose than that for which it is issued without the written permission of Energysolutions.

NOT SHOWN ON DWG-0105469-00-3010001-01

CM

PROJECT NO. 0105469
SITE HANFORD
AREA 200E
BUILDING NO. N/A

ORIGINATOR: F. ROACH 8/16/05
CHECKER: I. CONEN 5/16/05
APPROVED: J. RICHARDSON 7/8/05
IDV: N/A

DATE: 8/16/05
DATE: 5/16/05
DATE: 7/8/05
DATE: N/A

WTP CONTRACT NO. 24590-OL-HC4-HAHH-00001-20-00584

2345 STEVENS DRIVE, SUITE 240
RICHLAND, VA 99354

ENERGYSOLUTIONS

AUTOSAMPLING SYSTEM

SAMPLE BOTTLE

15 mL AND 35 mL ASSEMBLY

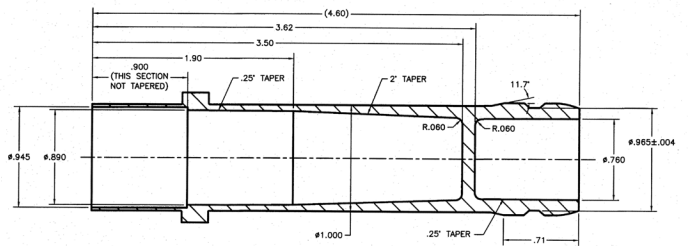
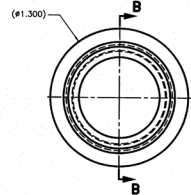
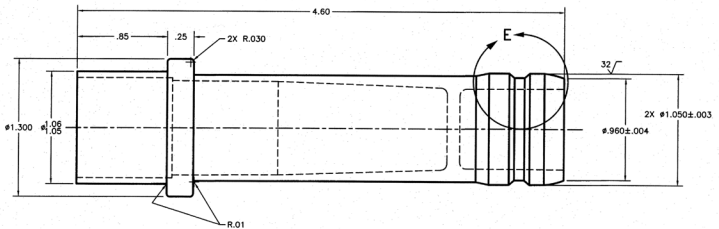
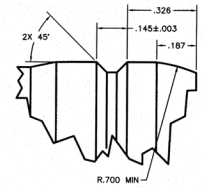
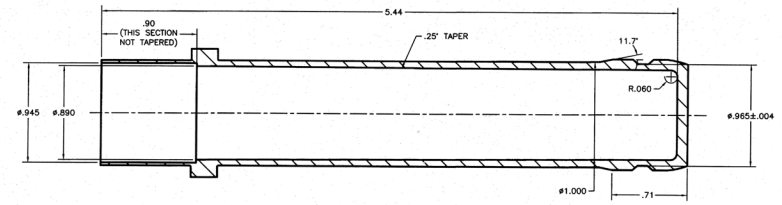
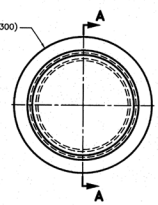
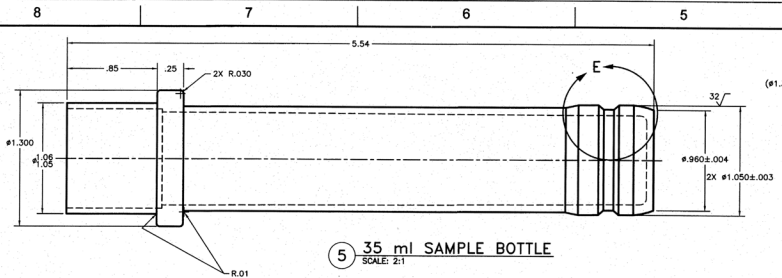
SHEET 1 OF 1

SCALE: DWG NO. DWG-0105469-M2-3080001-01 REV 6

10" SIZE = 3/4"

COMPUTER GENERATED FILE - MANUAL CHANGES NOT PERMITTED

RFP-WTP-PDC



UNLESS OTHERWISE SPECIFIED
ALL DIMENSIONS ARE IN INCHES.
REMOVE BURRS & SHARP EDGES.
THIRD ANGLE PROJECTION
TOLERANCES:
X = ±.1
XX = ±.02
XXX = ±.005
X/XX = ±1/16
ANGLE = ±.5°
MACHINED SURFACES
MACHINED INSIDE
RADII = .04 ±.02

ENERGYSOLUTIONS PROPRIETARY
This drawing is copyright ©
Energysolutions as dated. It is issued in
confidence for information only unless
otherwise stated in writing by
Energysolutions. It shall not be whole or
part to:
1. Copied, reproduced or transmitted in
any form.
2. Disclosed to any other party.
3. Stored on any retrieval system.
4. Used for any other purpose than that
for which it is issued without the
written permission of
Energysolutions.
NOT USED FOR
DWG-0105469-M7-3080001-01

GENERAL NOTES: (UNLESS OTHERWISE SPECIFIED)

- DIMENSIONS AND TOLERANCES ARE IN ACCORDANCE WITH ASME Y14.5-1994.
- BAR CODE LABEL PROPERTIES:
BAR CODE LABEL CHARACTER SET A
0.0075" NARROW BAR WIDTH
15 ML SAMPLE BOTTLE ASSEMBLY
DWG-0105469-M2-3080001-01, ITEM 2
7 CHARACTERS, FIRST CHARACTER "M" FOLLOWED BY
6 CHARACTER NUMBER. NUMBER IS SPECIFIED IN
PURCHASE REQUISITION.
35 ML SAMPLE BOTTLE ASSEMBLY
DWG-0105469-M2-3080001-01, ITEM 1
7 CHARACTERS, FIRST CHARACTER "M" FOLLOWED BY
6 CHARACTER NUMBER. NUMBER IS SPECIFIED IN
PURCHASE REQUISITION.
- FABRICATE, INSPECT AND TEST IN ACCORDANCE WITH SPECIFICATION
SP-0105469-M-00003, GENERAL PROCUREMENT SPECIFICATION FOR
AUTOSAMPLING SYSTEM.

SUPPLIER DOCUMENT STATUS		DATE
1	Q301 Complete	1/3
2	Work any process	
3	1.0 Review and comment. Work any process subject to modification of industrial processes.	
4	1.0 Review and comment. Work any process.	
5	1.0 Review and comment. Work any process.	

PROCESSED BY: RPL/WTP/POG
DATE: _____

REV	DESCRIPTION	ORIG	CHK	APVD	IDV	DATE
5	FINAL - APPROVED FOR CONSTRUCTION, REVISED PER ECN-0105469-M-00455	HR	RSC	ND	JBA	3/2/11
4	FINAL - APPROVED FOR CONSTRUCTION, REVISED PER ECN-0105469-M-00427	DN	RSC	ND	JBA	11/19/10
3	FINAL - APPROVED FOR CONSTRUCTION, REVISED PER ECN-0105469-M-00191	STB	RSC	ND	N/A	1/20/10
2	FINAL - REDRAWN - APPROVED FOR CONSTRUCTION REVISED PER ECN-0105469-M-00073	HR	GR	ND	N/A	3/4/09
1	REDRAWN - APPROVED FOR CONSTRUCTION REVISED PER ECN-0105469-M-00010	PKT	DC	JR	N/A	12/10/07
0	APPROVED FOR CONSTRUCTION	HLR	DC	JR	N/A	7/6/05

DRCM REF	REV	DESCRIPTION
RPT-0105469-M-00003	REV 4	

ENERGYSOLUTIONS
2345 STEVENS DRIVE, SUITE 240
RICHLAND, WA 99354

PROJECT NO. 0105469
SITE HANFORD
AREA 200E
BUILDING NO. N/A

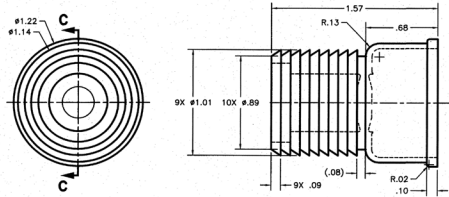
WTP CONTRACT NO. 24590-QL-HC4-HAHH-00001 - 06-00805 Rev 002

**AUTOSAMPLING SYSTEM
SAMPLE BOTTLE
15 mL AND 35 mL DETAILS
SHEET 1 OF 2**

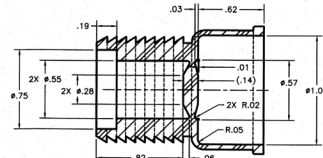
SCALE DWG NO. DWG-0105469-M7-3080036-01 REV 5
SHOWN NO. 5
D' SIZE = 34x22

NOTES:

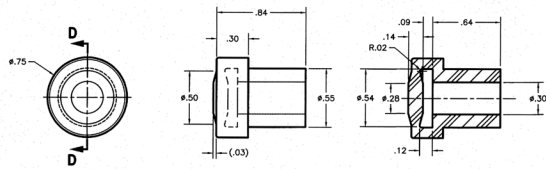
1. FOR GENERAL NOTES AND REFERENCE DRAWINGS SEE DWG-0105469-M7-3080036-01.



7 LID
SCALE: 2:1

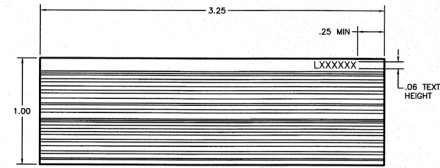


SECTION C-C
SCALE: 2:1

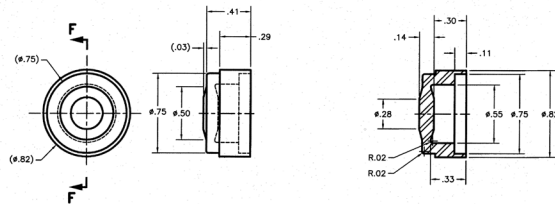


8 LID INSERT
SCALE: 2:1

SECTION D-D
SCALE: 2:1



9 BAR CODE LABEL
SCALE: 2:1



10 3RD SEPTUM
SCALE: 2:1

SECTION F-F
SCALE: 2:1

SUPPLIER DOCUMENT STATUS		REV	DATE
Q-331 Category	1.3		
1. Drawings are prepared			
2. Drawings are checked			
3. Drawings are approved			
4. Drawings are issued			
5. Drawings are cancelled			
6. Drawings are reworked			
7. Drawings are revised			
8. Drawings are reissued			
9. Drawings are rechecked			
10. Drawings are reapproved			
11. Drawings are reissued			
12. Drawings are rechecked			
13. Drawings are reapproved			
14. Drawings are reissued			
15. Drawings are rechecked			
16. Drawings are reapproved			
17. Drawings are reissued			
18. Drawings are rechecked			
19. Drawings are reapproved			
20. Drawings are reissued			
21. Drawings are rechecked			
22. Drawings are reapproved			
23. Drawings are reissued			
24. Drawings are rechecked			
25. Drawings are reapproved			
26. Drawings are reissued			
27. Drawings are rechecked			
28. Drawings are reapproved			
29. Drawings are reissued			
30. Drawings are rechecked			
31. Drawings are reapproved			
32. Drawings are reissued			
33. Drawings are rechecked			
34. Drawings are reapproved			
35. Drawings are reissued			
36. Drawings are rechecked			
37. Drawings are reapproved			
38. Drawings are reissued			
39. Drawings are rechecked			
40. Drawings are reapproved			
41. Drawings are reissued			
42. Drawings are rechecked			
43. Drawings are reapproved			
44. Drawings are reissued			
45. Drawings are rechecked			
46. Drawings are reapproved			
47. Drawings are reissued			
48. Drawings are rechecked			
49. Drawings are reapproved			
50. Drawings are reissued			
51. Drawings are rechecked			
52. Drawings are reapproved			
53. Drawings are reissued			
54. Drawings are rechecked			
55. Drawings are reapproved			
56. Drawings are reissued			
57. Drawings are rechecked			
58. Drawings are reapproved			
59. Drawings are reissued			
60. Drawings are rechecked			
61. Drawings are reapproved			
62. Drawings are reissued			
63. Drawings are rechecked			
64. Drawings are reapproved			
65. Drawings are reissued			
66. Drawings are rechecked			
67. Drawings are reapproved			
68. Drawings are reissued			
69. Drawings are rechecked			
70. Drawings are reapproved			
71. Drawings are reissued			
72. Drawings are rechecked			
73. Drawings are reapproved			
74. Drawings are reissued			
75. Drawings are rechecked			
76. Drawings are reapproved			
77. Drawings are reissued			
78. Drawings are rechecked			
79. Drawings are reapproved			
80. Drawings are reissued			
81. Drawings are rechecked			
82. Drawings are reapproved			
83. Drawings are reissued			
84. Drawings are rechecked			
85. Drawings are reapproved			
86. Drawings are reissued			
87. Drawings are rechecked			
88. Drawings are reapproved			
89. Drawings are reissued			
90. Drawings are rechecked			
91. Drawings are reapproved			
92. Drawings are reissued			
93. Drawings are rechecked			
94. Drawings are reapproved			
95. Drawings are reissued			
96. Drawings are rechecked			
97. Drawings are reapproved			
98. Drawings are reissued			
99. Drawings are rechecked			
100. Drawings are reapproved			

ISSUED BY: RFP-WTP PDC
DATE:

REV	DESCRIPTION	ORIG	CHK	APVD	IDV	DATE
3	FINAL - APPROVED FOR CONSTRUCTION REVISED PER ECN-0105469-M-00455	DN	RSC	ND	JBA	3/6/11
2	FINAL - APPROVED FOR CONSTRUCTION REVISED PER ECN-0105469-M-00427	STB	RSC	ND	N/A	1/20/10
1	FINAL - APPROVED FOR CONSTRUCTION REVISED PER ECN-0105469-M-00191	HR	GR	ND	N/A	3/4/09
0	FINAL - APPROVED FOR CONSTRUCTION CREATED PER ECN-0105469-M-00073					

DRCM REF	REV	DESCRIPTION	ORIG	CHK	APVD	IDV	DATE
RPT-0105469-M-00003	REV 4						

PROJECT NO.	0105469		
SITE	HANFORD		
AREA	200E		
BUILDING NO.	N/A		
ORIGINATOR	H ROACH	DATE	3/4/09
CHECKER	G RAMBE	DATE	3/4/09
APPROVED	N DOYLE	DATE	3/4/09
REV	N/A	DATE	N/A

WTP CONTRACT NO.	24590-QL-HC4-HAHH-00001-26-01640, 26-01640
ENERGYSOLUTIONS 2345 STEVENS DRIVE, SUITE 340 RICHLAND, WA 99354	
AUTOSAMPLING SYSTEM SAMPLE BOTTLE 15 mL AND 35 mL DETAILS SHEET 2	
SCALE SHOWN	DWG NO. DWG-0105469-M7-3080036-02
REV	3

ENERGYSOLUTIONS PROPRIETARY
 This drawing is copyright © EnergySolutions as stated. It is issued in confidence for information only unless otherwise stated in writing by EnergySolutions. It shall not be whole or part for:
 1. Copied, reproduced or transmitted in any form.
 2. Disclosed to any other party.
 3. Stored on any retrieval system.
 4. Used for any other purpose than that for which it is issued without the written permission of EnergySolutions.
 NOT USED OR DWG-0105469-M2-3080036-01